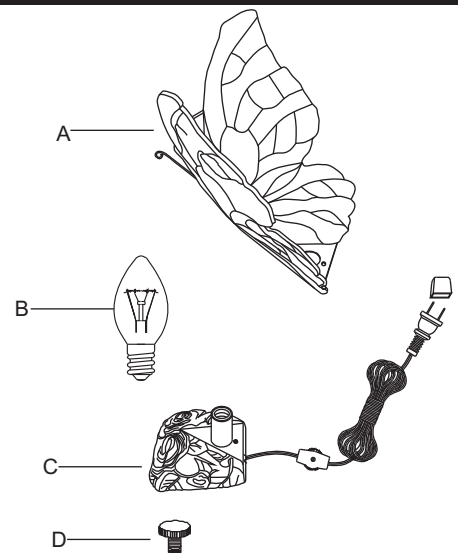




REVISED 2018-05-29

## PACKAGE CONTENTS

PART	DESCRIPTION	QUANTITY	Stock Part#
A	Butterfly	1 pc	N/A
B	Bulb C7	1 pc	
C	Base	1 pc	
D	Lock Screw	1 pc	



### Questions, problems, missing parts?

Before returning to your retailer, call our customer service at 1-800-645-3184, Monday - Friday, 7:00 a.m. -4:00 p.m., CST .



## SAFETY INFORMATION

- Risk of shock, do not plug in the unit before assembly is complete.
  - These instructions are provided for your safety. It is very important you read them completely before installing the fixture.
  - Disconnect fixture from power source before replacing bulbs.
- Make sure bulbs are given sufficient time to cool before removal.  
- Do not subject glass parts to any shock while in operation or shattering may result.

## PREPARATION

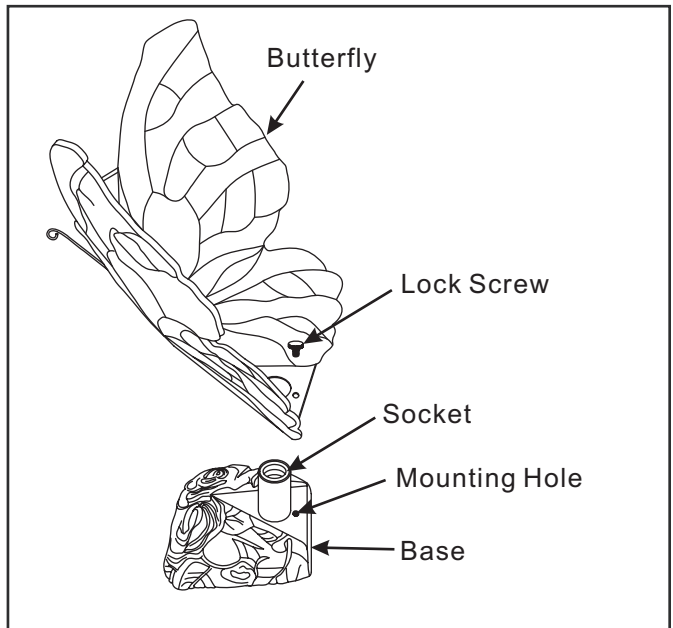
Before beginning assembly, installation or operation of product, make sure all parts are present. Compare parts with package contents list and diagram on previous page. If any part is missing or damaged, do not attempt to assemble, install or operate the product. Contact customer service for replacement parts

Bulb Recommended: (1) Max 15 Watt Max Candelabra Base Bulb (included), Alternate LED bulb.

## ASSEMBLY INSTRUCTIONS

### STEP 1:

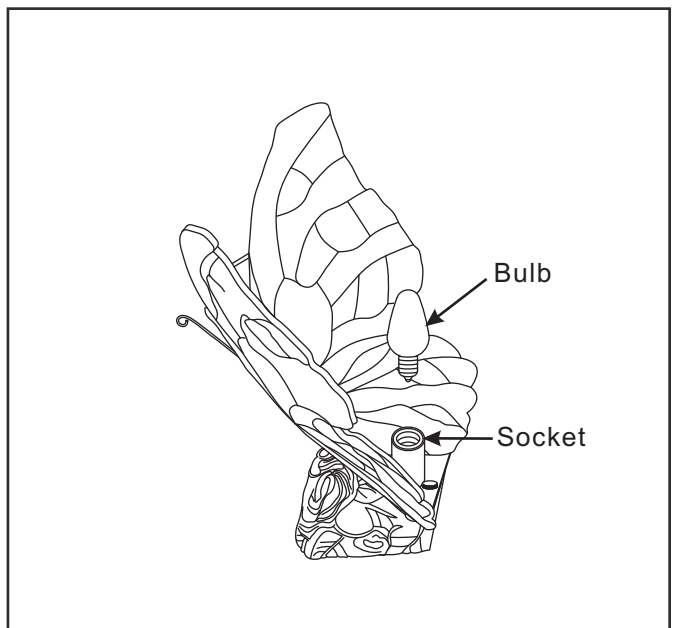
- A. Place the Butterfly (A) over the Socket on the Base (C) and secure with the Lock Screw (D). Hand tighten until snug.



### STEP 2

- A. Insert bulb C7 (B) and screw properly into place.

Your fixture is now assembled and ready to use.  
Enjoy!



Your installation is now complete! Restore electricity and save this sheet for future reference.

## CARE AND MAINTENANCE

- To clean, turn off and wipe with a damp, non-abrasive cloth.

## TROUBLESHOOTING

### 1) The light does not come on at all:

- a) Make sure the wall switch and circuit breaker are on.

If unable to fix any of the above issues, please consult a certified electrician.

**FIVE-YEAR LIMITED WARRANTY:** If, during normal use, this PATRIOT LIGHTING® light breaks or fails due to a defect in material or workmanship within five (5) year from the date of original purchase, simply bring this light with the original sales receipt back to your nearest MENARDS® retail store. At its discretion, PATRIOT LIGHTING® agrees to have the light or any defective part(s) repaired or replaced with the same or similar PATRIOT LIGHTING® product or part free of charge, within the stated warranty period, when returned by the original purchaser with the original sales receipt. This warranty; (1) excludes expendable parts; (2) shall be void if this tool is used for commercial and/or retail purposes; and (3) does not cover any losses, injuries to persons/property or costs. This warranty does give you specific legal rights and you may have other rights, which vary from state to state.



### Questions, problems, missing parts?

Before returning to your retailer, call our customer service at 1-800-645-3184, Monday - Friday, 7:00 a.m. -4:00 p.m., CST .