

In this 3D model, facets appear as semi-transparent to reveal overhangs.

## PREPARED FOR

Contact:	Javier Montoya
Company:	Eagleview
Address:	10900 NE 4th St Suite 800  Bellevue, WA 98004
Phone:	206-602-9973

## TABLE OF CONTENTS

Images .....	1
Length Diagram .....	4
Pitch Diagram .....	5
Area Diagram .....	6
Notes Diagram .....	7
3D Wall Area Diagram .....	8
Alternate 3D Wall View .....	10
Window and Door Diagram .....	12
Elevation Diagrams .....	14
Report Summary .....	19
Wall Report Summary .....	21

## MEASUREMENTS

Total Roof Area = 6,137 sq ft  
 Total Roof Facets = 31  
 Predominant Pitch = 12/12  
 Number of Stories > 1  
 Total Ridges/Hips = 359 ft  
 Total Valleys = 155 ft  
 Total Rakes = 117 ft  
 Total Eaves = 415 ft  
 Total Wall Area = 7,247 sq ft  
 Total Wall Facets = 65

Measurements provided by [www.eagleview.com](http://www.eagleview.com)



**Certified Accurate**  
Certified accuracy on all roof reports.



**Satisfaction Guaranteed**  
Satisfaction guaranteed on all wall reports.

## IMAGES

The following aerial images show different angles of this structure for your reference.

Top View



## IMAGES

North Side



South Side



## IMAGES

East Side

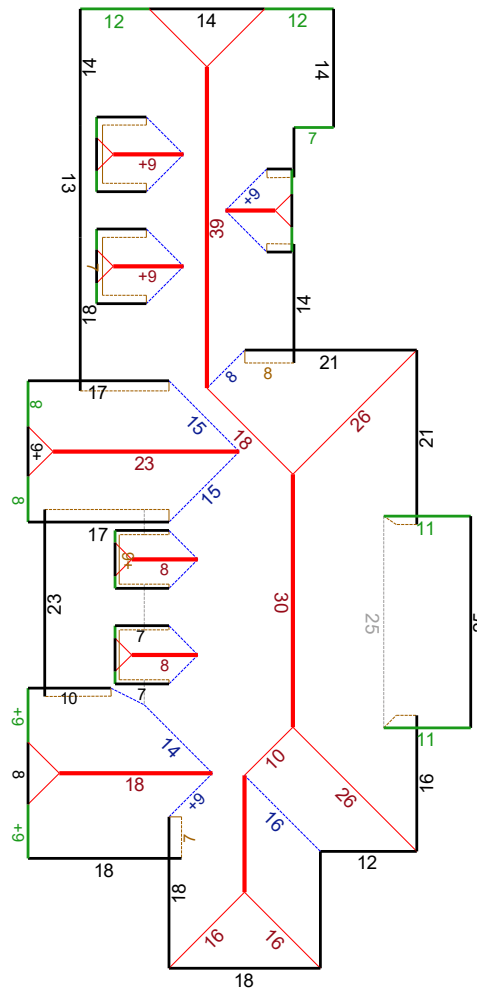


West Side



# LENGTH DIAGRAM

Total Line Lengths:

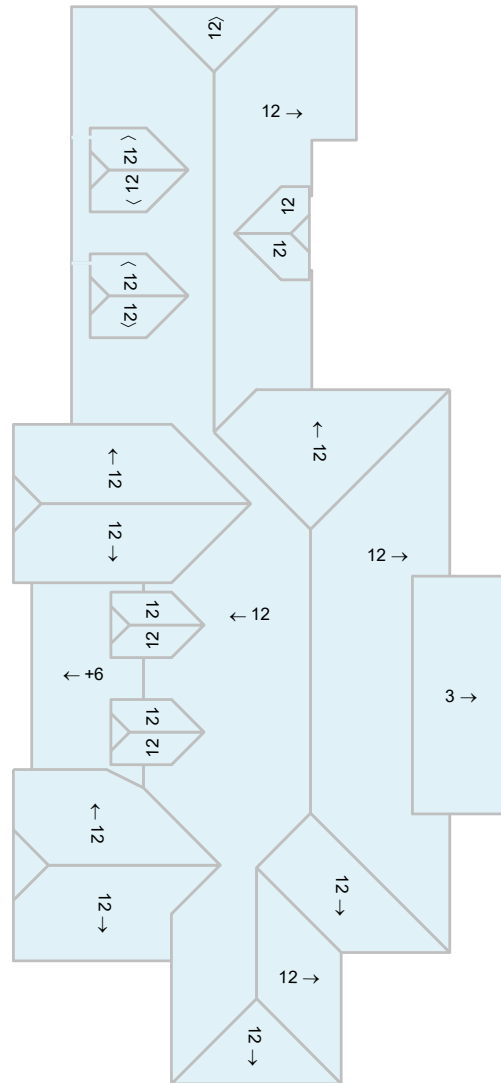
**Ridges = 164 ft**
**Hips = 195 ft**
**Valleys = 155 ft**
**Rakes = 117 ft**
**Eaves = 415 ft**
**Flashing = 41 ft**
**Step flashing = 139 ft**
**Parapets = 0 ft**


© 2019 Eagle View Technologies, Inc., All Rights Reserved.

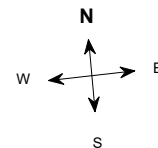
**Note:** This diagram contains segment lengths (rounded to the nearest whole number) over 5.0 Feet. In some cases, segment labels have been removed for readability. Plus signs preface some numbers to avoid confusion when rotated (e.g. +6 and +9).

# PITCH DIAGRAM

Pitch values are shown in inches per foot, and arrows indicate slope direction. The predominant pitch on this roof is 12/12



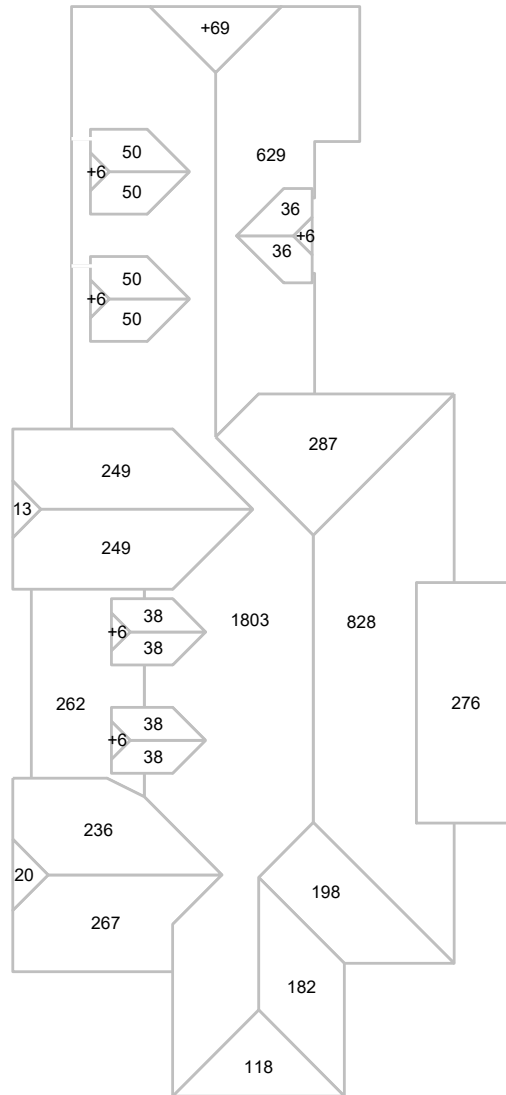
© 2019 Eagle View Technologies, Inc., All Rights Reserved.



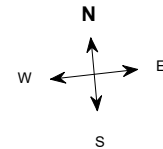
Note: This diagram contains labeled pitches for facet areas larger than 20.0 square feet. In some cases, pitch labels have been removed for readability. Blue shading indicates a pitch of 3/12 and greater.

# AREA DIAGRAM

Total Area = 6,137 sq ft, with 31 facets.



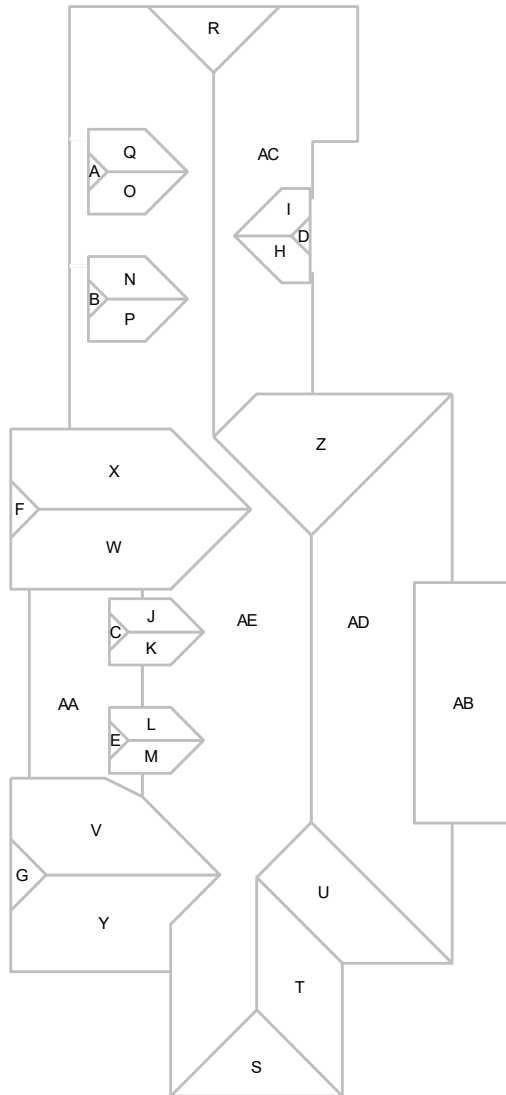
© 2019 Eagle View Technologies, Inc., All Rights Reserved.



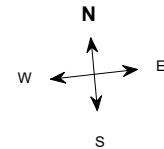
**Note:** This diagram shows the square feet of each roof facet (rounded to the nearest Foot). The total area in square feet, at the top of this page, is based on the non-rounded values of each roof facet (rounded to the nearest square foot after being totaled).

# NOTES DIAGRAM

Roof facets are labeled from smallest to largest (A to Z) for easy reference.



© 2019 Eagle View Technologies, Inc., All Rights Reserved.

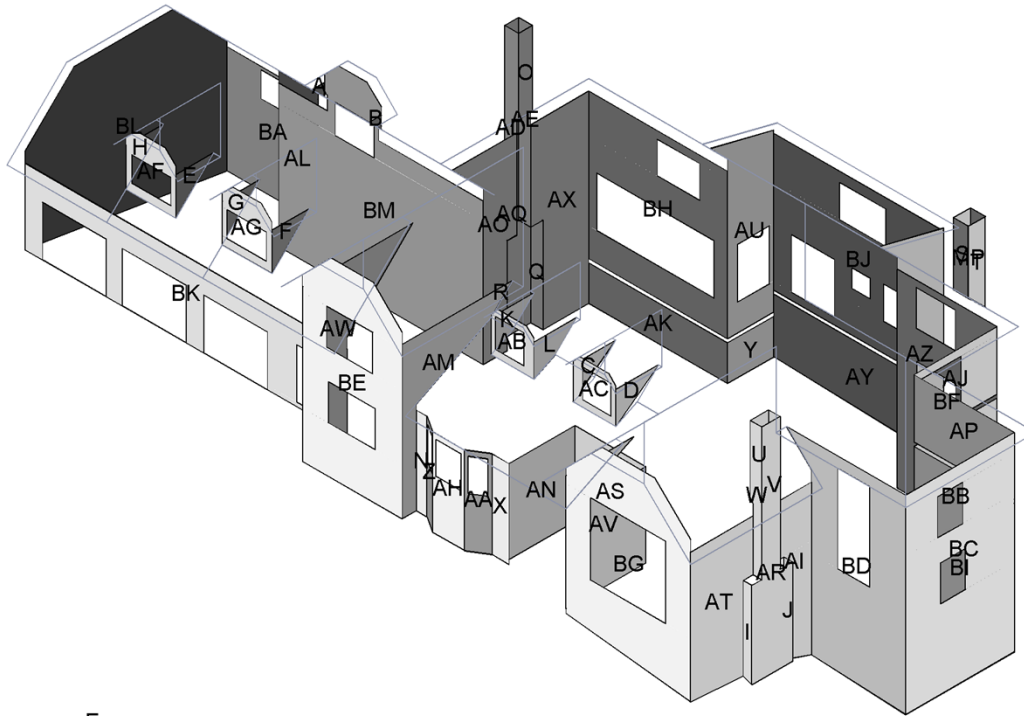


**Note:** This diagram also appears in the Property Owner Report.

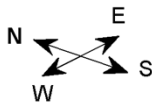
# WALL AREA DIAGRAM

Total Wall Area = 7,247 sq ft, with 65 facets.

Total Wall Area with Windows and Doors = 8,261 sq ft



© 2019 Eagle View Technologies, Inc., All Rights Reserved.



### Wall Area by Direction

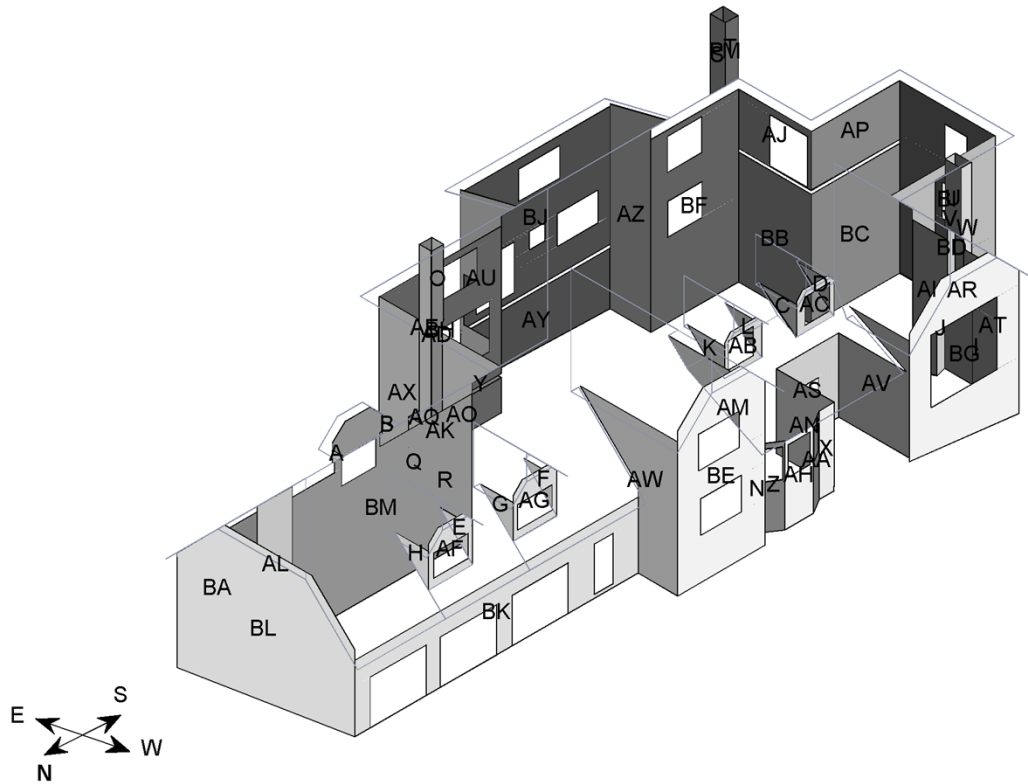
<b>North</b>	<b>East</b>	<b>South</b>	<b>West</b>
A - 1.6 sq ft	P - 22.8 sq ft	B - 1.6 sq ft	I - 14.4 sq ft
C - 13.5 sq ft	Q - 23.1 sq ft	D - 13.5 sq ft	J - 14.9 sq ft
G - 14 sq ft	R - 23.1 sq ft	E - 14 sq ft	M - 17.9 sq ft
H - 14 sq ft	V - 26.6 sq ft	F - 14 sq ft	N - 18.4 sq ft
K - 15.7 sq ft	AE - 45.2 sq ft	L - 15.7 sq ft	W - 26.6 sq ft
S - 23.9 sq ft	AK - 96.7 sq ft	O - 20.3 sq ft	X - 29.4 sq ft
U - 24.4 sq ft	AP - 115.2 sq ft	T - 23.9 sq ft	Z - 23.6 sq ft
Y - 32.2 sq ft	AY - 191.5 sq ft	AI - 91.5 sq ft	AA - 25.1 sq ft
AO - 114 sq ft	BA - 181.6 sq ft	AJ - 53.4 sq ft	AB - 19 sq ft
AQ - 115.3 sq ft	BC - 252.8 sq ft	AL - 103.8 sq ft	AC - 19 sq ft
AU - 120.1 sq ft	BF - 318.1 sq ft	AM - 106.1 sq ft	AD - 45.2 sq ft
AV - 154 sq ft	BH - 255.1 sq ft	AN - 108.1 sq ft	AF - 33 sq ft
AW - 175.9 sq ft	BJ - 348.4 sq ft	AR - 116.6 sq ft	AG - 33 sq ft

**Wall Area by Direction continued**

<b><u>North</u></b>	<b><u>East</u></b>	<b><u>South</u></b>	<b><u>West</u></b>
AX - 187.4 sq ft BL - 548.2 sq ft	BM - 595.8 sq ft	AT - 147.4 sq ft AZ - 192 sq ft BB - 209 sq ft BI - 372 sq ft	AH - 39.5 sq ft AS - 88.9 sq ft BD - 298.8 sq ft BE - 293.5 sq ft BG - 286.2 sq ft BK - 266.2 sq ft
<b>1554.2 sq ft</b>	<b>2496 sq ft</b>	<b>1602.9 sq ft</b>	<b>1592.6 sq ft</b>

# ALTERNATE WALL AREA

Total Wall Area = 7,247 sq ft, with 65 facets.  
 Total Wall Area with Windows and Doors = 8,261 sq ft



© 2019 Eagle View Technologies, Inc., All Rights Reserved.

**Wall Area by Direction**

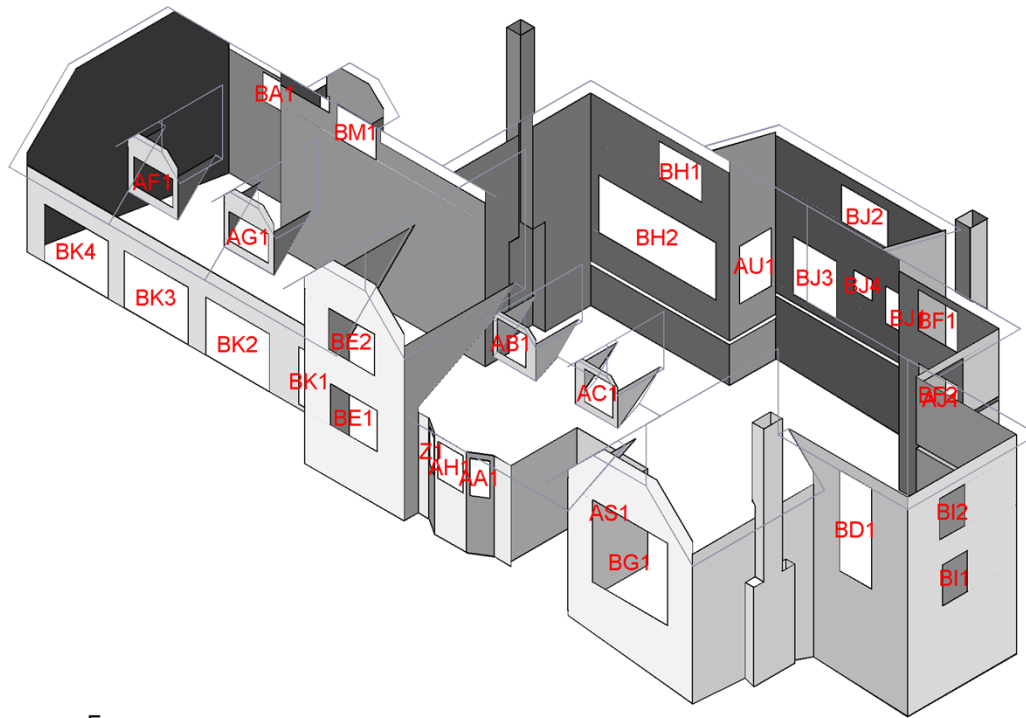
<b>North</b>	<b>East</b>	<b>South</b>	<b>West</b>
A - 1.6 sq ft	P - 22.8 sq ft	B - 1.6 sq ft	I - 14.4 sq ft
C - 13.5 sq ft	Q - 23.1 sq ft	D - 13.5 sq ft	J - 14.9 sq ft
G - 14 sq ft	R - 23.1 sq ft	E - 14 sq ft	M - 17.9 sq ft
H - 14 sq ft	V - 26.6 sq ft	F - 14 sq ft	N - 18.4 sq ft
K - 15.7 sq ft	AE - 45.2 sq ft	L - 15.7 sq ft	W - 26.6 sq ft
S - 23.9 sq ft	AK - 96.7 sq ft	O - 20.3 sq ft	X - 29.4 sq ft
U - 24.4 sq ft	AP - 115.2 sq ft	T - 23.9 sq ft	Z - 23.6 sq ft
Y - 32.2 sq ft	AY - 191.5 sq ft	AI - 91.5 sq ft	AA - 25.1 sq ft
AO - 114 sq ft	BA - 181.6 sq ft	AJ - 53.4 sq ft	AB - 19 sq ft
AQ - 115.3 sq ft	BC - 252.8 sq ft	AL - 103.8 sq ft	AC - 19 sq ft
AU - 120.1 sq ft	BF - 318.1 sq ft	AM - 106.1 sq ft	AD - 45.2 sq ft
AV - 154 sq ft	BH - 255.1 sq ft	AN - 108.1 sq ft	AF - 33 sq ft

**Wall Area by Direction continued...**

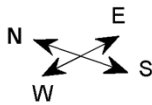
<b><u>North</u></b>	<b><u>East</u></b>	<b><u>South</u></b>	<b><u>West</u></b>
AW - 175.9 sq ft AX - 187.4 sq ft BL - 548.2 sq ft	BJ - 348.4 sq ft BM - 595.8 sq ft	AR - 116.6 sq ft AT - 147.4 sq ft AZ - 192 sq ft BB - 209 sq ft BI - 372 sq ft	AG - 33 sq ft AH - 39.5 sq ft AS - 88.9 sq ft BD - 298.8 sq ft BE - 293.5 sq ft BG - 286.2 sq ft BK - 266.2 sq ft
<b>1554.2 sq ft</b>	<b>2496 sq ft</b>	<b>1602.9 sq ft</b>	<b>1592.6 sq ft</b>

# WINDOW AND DOOR DIAGRAM

Total Window and Door Area = 1015 sq ft, with 30 windows and doors  
 Total Window and Door Perimeter = 674 ft



© 2019 Eagle View Technologies, Inc., All Rights Reserved.



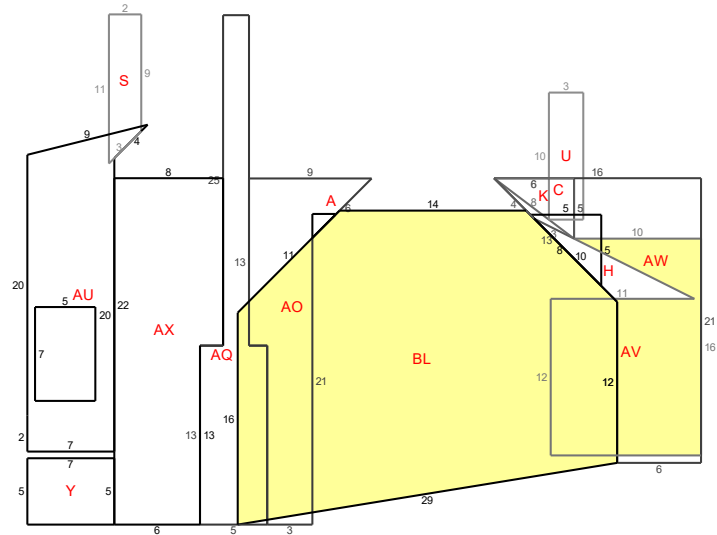
### Window and Door Measurements

<u>North</u>	<u>East</u>	<u>South</u>	<u>West</u>
AU1 - 31.5 sq ft	BA1 - 12.2 sq ft BF1 - 27.5 sq ft BF2 - 27.5 sq ft BH1 - 27 sq ft BH2 - 115.5 sq ft BJ1 - 29.2 sq ft BJ2 - 29.2 sq ft BJ3 - 42 sq ft BJ4 - 6.2 sq ft BM1 - 22 sq ft	AJ1 - 42 sq ft BI1 - 17.5 sq ft BI2 - 17.5 sq ft	Z1 - 9 sq ft AA1 - 9 sq ft AB1 - 16 sq ft AC1 - 16 sq ft AF1 - 19.3 sq ft AG1 - 19.3 sq ft AH1 - 15.8 sq ft AS1 - 28 sq ft BD1 - 55.1 sq ft BE1 - 32.5 sq ft BE2 - 32.5 sq ft BG1 - 105 sq ft

**Window and Door Measurements continued...**

<u><b>North</b></u>	<u><b>East</b></u>	<u><b>South</b></u>	<u><b>West</b></u>
<p style="text-align: center;"><b>31.5 sq ft</b></p>	<p style="text-align: center;"><b>338.3 sq ft</b></p>	<p style="text-align: center;"><b>77 sq ft</b></p>	<p style="text-align: center;">           BK1 - 21 sq ft            BK2 - 63.2 sq ft            BK3 - 62.8 sq ft            BK4 - 63.2 sq ft    <b>567.7 sq ft</b> </p>

# NORTH ELEVATION DIAGRAM

 Top of Walls = 144 ft  
 Bottom of Walls = 156 ft


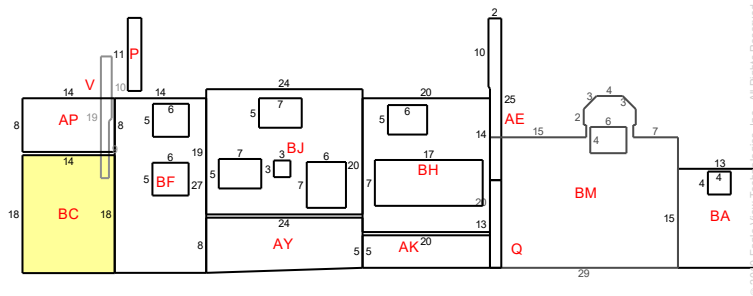
### North Elevation Details

Wall	Wall Area	Window & Door Area	Window & Door Perimeter	Window & Door Count
A	1.6	0.0	0.0	0
C	13.5	0.0	0.0	0
G	14.0	0.0	0.0	0
H	14.0	0.0	0.0	0
K	15.7	0.0	0.0	0
S	23.9	0.0	0.0	0
U	24.4	0.0	0.0	0
Y	32.2	0.0	0.0	0
AO	114.0	0.0	0.0	0
AQ	115.3	0.0	0.0	0
AU	120.1	31.5	23.0	1
AV	154.0	0.0	0.0	0
AW	175.9	0.0	0.0	0
AX	187.4	0.0	0.0	0
BL	548.2	0.0	0.0	0
<b>Total</b>	<b>1554.2 sq ft</b>	<b>31.5 sq ft</b>	<b>23 ft</b>	<b>1</b>

**Note: On-site verification of yellow shaded areas is needed. Details are on the Wall Report Summary Page.** This diagram shows segment lengths rounded to the nearest whole number. The window & door and wall area in square feet (rounded to the nearest tenth) is based on the actual (non-rounded) value of each segment length.

## EAST ELEVATION DIAGRAM

Top of Walls = 183 ft  
Bottom of Walls = 180 ft

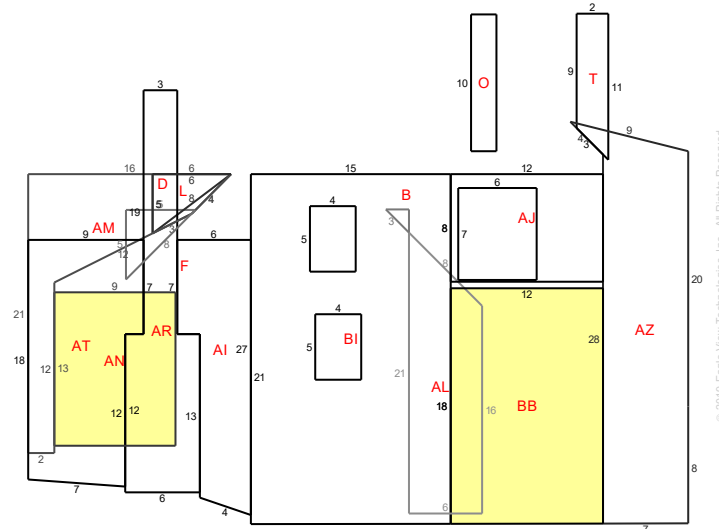


### East Elevation Details

Wall	Wall Area	Window & Door Area	Window & Door Perimeter	Window & Door Count
P	22.8	0.0	0.0	0
Q	23.1	0.0	0.0	0
R	23.1	0.0	0.0	0
V	26.6	0.0	0.0	0
AE	45.2	0.0	0.0	0
AK	96.7	0.0	0.0	0
AP	115.2	0.0	0.0	0
AY	191.5	0.0	0.0	0
BA	181.6	12.2	14.0	1
BC	252.8	0.0	0.0	0
BF	318.1	55.0	42.0	2
BH	255.1	142.5	68.0	2
BJ	348.4	106.6	80.0	4
BM	595.8	22.0	19.0	1
<b>Total</b>	<b>2496 sq ft</b>	<b>338.3 sq ft</b>	<b>223 ft</b>	<b>10</b>

**Note: On-site verification of yellow shaded areas is needed. Details are on the Wall Report Summary Page.** This diagram shows segment lengths rounded to the nearest whole number. The window & door and wall area in square feet (rounded to the nearest tenth) is based on the actual (non-rounded) value of each segment length.

# SOUTH ELEVATION DIAGRAM

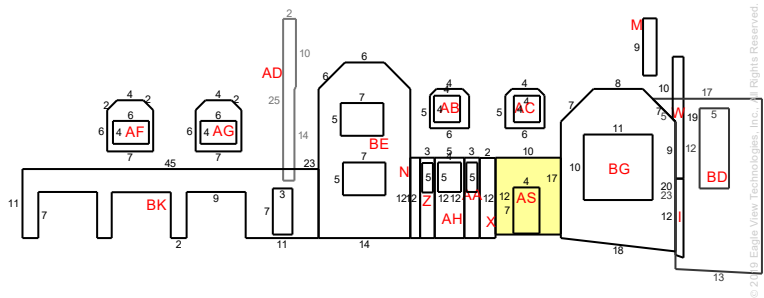
 Top of Walls = 130 ft  
 Bottom of Walls = 136 ft


**South Elevation Details**

Wall	Wall Area	Window & Door Area	Window & Door Perimeter	Window & Door Count
B	1.6	0.0	0.0	0
D	13.5	0.0	0.0	0
E	14.0	0.0	0.0	0
F	14.0	0.0	0.0	0
L	15.7	0.0	0.0	0
O	20.3	0.0	0.0	0
T	23.9	0.0	0.0	0
AI	91.5	0.0	0.0	0
AJ	53.4	42.0	26.0	1
AL	103.8	0.0	0.0	0
AM	106.1	0.0	0.0	0
AN	108.1	0.0	0.0	0
AR	116.6	0.0	0.0	0
AT	147.4	0.0	0.0	0
AZ	192.0	0.0	0.0	0
BB	209.0	0.0	0.0	0
BI	372.0	35.0	34.0	2
<b>Total</b>	<b>1602.9 sq ft</b>	<b>77 sq ft</b>	<b>60 ft</b>	<b>3</b>

**Note: On-site verification of yellow shaded areas is needed. Details are on the Wall Report Summary Page.** This diagram shows segment lengths rounded to the nearest whole number. The window & door and wall area in square feet (rounded to the nearest tenth) is based on the actual (non-rounded) value of each segment length.

# WEST ELEVATION DIAGRAM

 Top of Walls = 169 ft  
 Bottom of Walls = 156 ft


### West Elevation Details

Wall	Wall Area	Window & Door Area	Window & Door Perimeter	Window & Door Count
I	14.4	0.0	0.0	0
J	14.9	0.0	0.0	0
M	17.9	0.0	0.0	0
N	18.4	0.0	0.0	0
W	26.6	0.0	0.0	0
X	29.4	0.0	0.0	0
Z	23.6	9.0	13.0	1
AA	25.1	9.0	13.0	1
AB	19.0	16.0	16.0	1
AC	19.0	16.0	16.0	1
AD	45.2	0.0	0.0	0
AF	33.0	19.3	18.0	1
AG	33.0	19.3	18.0	1
AH	39.5	15.8	16.0	1
AS	88.9	28.0	22.0	1
BD	298.8	55.1	33.4	1
BE	293.5	65.0	46.0	2
BG	286.2	105.0	41.0	1
BK	266.2	210.2	116.0	4

**Note: On-site verification of yellow shaded areas is needed. Details are on the Wall Report Summary Page.** This diagram shows segment lengths rounded to the nearest whole number. The window & door and wall area in square feet (rounded to the nearest tenth) is based on the actual (non-rounded) value of each segment length.

West Elevation Details continued...

<b>Wall</b>	<b>Wall Area</b>	<b>Window &amp; Door Area</b>	<b>Window &amp; Door Perimeter</b>	<b>Window &amp; Door Count</b>
<b>Total</b>	<b>1592.6 sq ft</b>	<b>567.7 sq ft</b>	<b>368.4 ft</b>	<b>16</b>

## REPORT SUMMARY

### All Structures

#### Areas per Pitch

Roof Pitches	3/12	6/12	12/12
Area (sq ft)	276.0	261.6	5599.0
% of Roof	4.5%	4.3%	91.2%

The table above lists each pitch on this roof and the total area and percent (both rounded) of the roof with that pitch.

#### Structure Complexity

Simple	Normal	Complex
--------	--------	---------

#### Waste Calculation

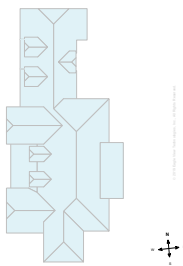
NOTE: This waste calculation table is for asphalt shingle roofing applications. All values in table below only include roof areas of 3/12 pitch or greater. For total measurements of all pitches, please refer to the **Lengths, Areas, and Pitches** section below.

Waste %	0%	5%	10%	13%	15%	17%	20%	25%	30%
Area (Sq ft)	<b>6136</b>	6443	6750	6934	<b>7057</b>	7180	7364	7670	7977
Squares *	<b>61.66</b>	64.66	67.66	69.66	<b>70.66</b>	72.00	73.66	77.00	80.00
	<b>Measured</b>				<b>Suggested</b>				

\* Squares are rounded up to the 1/3 of a square

Additional materials needed for ridge, hip, and starter lengths are not included in the above table. The provided suggested waste factor is intended to serve as a guide—actual waste percentages may differ based upon several variables that EagleView does not control. These waste factor variables include, but are not limited to, individual installation techniques, crew experiences, asphalt shingle material subtleties, and potential salvage from the site. Individual results may vary from the suggested waste factor that EagleView has provided. The suggested waste is not to replace or substitute for experience or judgment as to any given replacement or repair work.

### All Structures Totals



Total Roof Facets = 31

#### Lengths, Areas and Pitches

Ridges = 164 ft (10 Ridges)  
 Hips = 195 ft (22 Hips).  
 Valleys = 155 ft (17 Valleys)  
 Rakes† = 117 ft (19 Rakes)  
 Eaves/Starter‡ = 415 ft (37 Eaves)  
 Drip Edge (Eaves + Rakes) = 532 ft (56 Lengths)  
 Parapet Walls = 0 (0 Lengths).  
 Flashing = 41 ft (19 Lengths)  
 Step flashing = 139 ft (24 Lengths)  
 Predominant Pitch = 12/12

**Total Area (All Pitches) = 6,137 sq ft**

#### Property Location

Longitude = -122.6776327  
 Latitude = 45.3414934

#### Notes

This was ordered as a residential property. There were no changes to the structure in the past four years.

† Rakes are defined as roof edges that are sloped (not level).

‡ Eaves are defined as roof edges that are not sloped and level.

24800 SW Valley View Rd, West Linn, OR 97068-8635

Report: 30227627

**Online Maps**

Online map of property

[http://maps.google.com/maps?f=g&source=s\\_q&hl=en&geocode=&q=24800+SW+Valley+View+Rd,West+Linn,OR,97068-8635](http://maps.google.com/maps?f=g&source=s_q&hl=en&geocode=&q=24800+SW+Valley+View+Rd,West+Linn,OR,97068-8635)

Directions from Eagleview to this property

[http://maps.google.com/maps?f=d&source=s\\_d&saddr=10900+NE+4th+St,Suite+800,Bellevue,WA,98004&daddr=24800+SW+Valley+View+Rd,West+Linn,OR,97068-8635](http://maps.google.com/maps?f=d&source=s_d&saddr=10900+NE+4th+St,Suite+800,Bellevue,WA,98004&daddr=24800+SW+Valley+View+Rd,West+Linn,OR,97068-8635)

## WALL REPORT SUMMARY

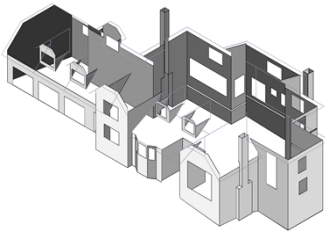
**Wall Area Waste Calculation Table** (excluding windows and doors)

Waste %	0%	10%	11%	12%	13%	14%	15%	20%
Area (sq ft)	7,247	7,971	8,044	8,116	8,189	8,261	8,333	8,696
Squares	72.5	79.7	80.4	81.2	81.9	82.6	83.3	87.0

This table shows the total wall area excluding windows and doors, based upon different waste percentages. The waste factor is subject to the complexity of the structure, image quality, siding techniques and your experience. Please consider this when calculating appropriate waste percentages. Note that only the wall area is included in these waste calculations. Accessories may require additional material.

### Report Comments

**Due to obstructions in available images of this property, please verify measurements on portion of structure highlighted in yellow.**


© 2018 Eagle View Technologies, Inc. All Rights Reserved

### Total Lengths & Areas

Wall Area = 7,247 sq ft  
 Wall Area with Windows and Doors = 8,261 sq ft  
 Top of Walls = 625 ft  
 Bottom of Walls = 627 ft  
 Inside Corners = 282 ft  
 Outside Corners = 583 ft  
 Inside Corners > 90° = 26 ft  
 Outside Corners > 90° = 26 ft  
 Window and Door Area = 1015 sq ft  
 Window and Door Perimeter = 674 ft

Total Wall Facets = 65  
 Total Windows and Doors = 30

Wall measurements should be field verified to confirm accuracy. Wall areas assume that flat soffits exist at the eaves. If sloped soffits are present, wall height and wall area measurements will likely be off.