

Tuscany[®]

**2-DOOR
LAUNDRY CABINET KIT**



OWNER'S MANUAL

QL054
6725159

Table of Contents

| | | | |
|---------------------------------|---|--|----|
| Table of Contents | 2 | Faucet and Sprayer Installation | 7 |
| Safety Information | 2 | Strainer Installation | 7 |
| Warranty | 3 | Mounting the Utility Sink | 8 |
| Warranty Claim Procedure | 3 | Placement | 8 |
| Pre-Installation | 4 | Supply Line Assembly | 8 |
| Tools/Materials Required | 4 | Maintenance | 8 |
| Package Contents | 5 | Cartridge Replacement | 8 |
| Installation | 6 | Care and Cleaning | 9 |
| Base Installation | 6 | Utility Sink | 9 |
| Door Handle Installation | 6 | Cabinet | 9 |
| | | Service Parts | 10 |

Safety Information

READ AND SAVE THESE INSTRUCTIONS

1. Inspect your unit before proceeding. Once you unpack your unit, check for chips, scratches, cracks, dents or scuff marks. If any damage is noticed, do not install.
2. Use this unit only in the manner intended by the manufacturer. If you have any questions, contact the manufacturer.
3. Installation work and plumbing must be done by qualified person(s) in accordance with all applicable codes and standards.
4. Protect the entire surface during installation.
5. All holes drilled into the unit must be done from the finished surface side with extreme care and caulked very carefully to form a watertight barrier.

 **DANGER:** Always wear safety goggles and gloves in order to avoid personal injury.

Warranty

A thorough inspection must be made before installation and any damage must be promptly reported. We will not be liable for failures or damage that could have been discovered or avoided by proper inspection and testing prior to installation.

We warrant this laundry cabinet, sink and components to be free from defects in materials or workmanship for one (1) year from the date of purchase. We warrant the faucet to be free from defects in materials or workmanship for as long as the original consumer purchaser owns this product. Proof of purchase (original sales receipt) from the original consumer purchaser must be made available to us for all warranty claims.

This warranty is non-transferable and shall be voided if the unit is removed from its initial installation or if it is not installed following the manufacturer's instructions. It does not apply in the event of product damage due to the use of other than genuine our replacement parts, (Replacement parts may be obtained by calling 1-800-626-3525 between 8:30 am - 5:00 pm EST) installation error, abuse, misuse or improper care and maintenance (whether performed by a plumber, contractor, service provider or member of the purchaser's household). The warranty excludes damage due to aggressive air or water conditions, harsh or abrasive cleaners and/or materials.

Under no circumstance shall we be held liable for personal injury or property damage resulting from improper installation or use of this product. We will not be held liable for inconvenience caused by loss of use of this product, costs incurred for labour or materials, removal and installation of replacement units, or any other incidental or consequential damages. Costs relating to obtaining access for repair or replacement are the responsibility of the user.

Our obligation shall be limited to the repair or replacement of a unit (at our discretion) that may prove, by our sole examination, to be defective under normal use and service during the warranty period.

Any failure of this product that is not traceable to a defect in material or workmanship is not covered by this warranty. These non-warrantable items include, but are not limited to:

- Improper installation not in accordance with manufacturer's instructions.
- Dents and/or scratches incurred during shipping, handling, or installation.
- Change in colour or finish due to chemical usage.
- Damage caused by failure to follow care and cleaning guidelines, including damage caused by the use of abrasive cleaners.
- Alterations made to the unit by the purchaser or installer.
- Damage caused by accidental impact, fire, flood, freezing, and normal wear.
- Bends and warping caused by forced connections, over-tightened fittings, and inadequate support during installation.
- This warranty does not extend to commercial and institutional installation or use.

WARRANTY CLAIM PROCEDURE

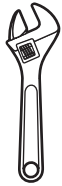
If a claimable defect occurs or replacement parts are needed, please contact our customer service team at 1-800-626-3525 (8:30 am - 5 pm, EST, Monday - Friday).

Before you make your call, please ensure that you have:

- Model number or description.
- Proof of sale.
- Details regarding the defect and/or part number.
- Name(s) and address(es) of the owner and/or installer.

Pre-Installation

TOOLS/MATERIALS REQUIRED (NOT SUPPLIED)



Adjustable wrench



Needle nose pliers



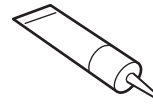
Phillips screwdriver



Utility knife



Pipe wrench



Sealant



Carpenter's level



Hacksaw



Safety gloves



Safety goggles



Allen Key

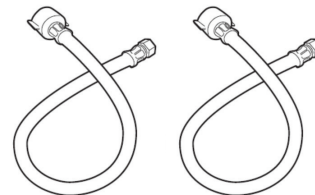
PARTS REQUIRED (NOT SUPPLIED)



P-Trap



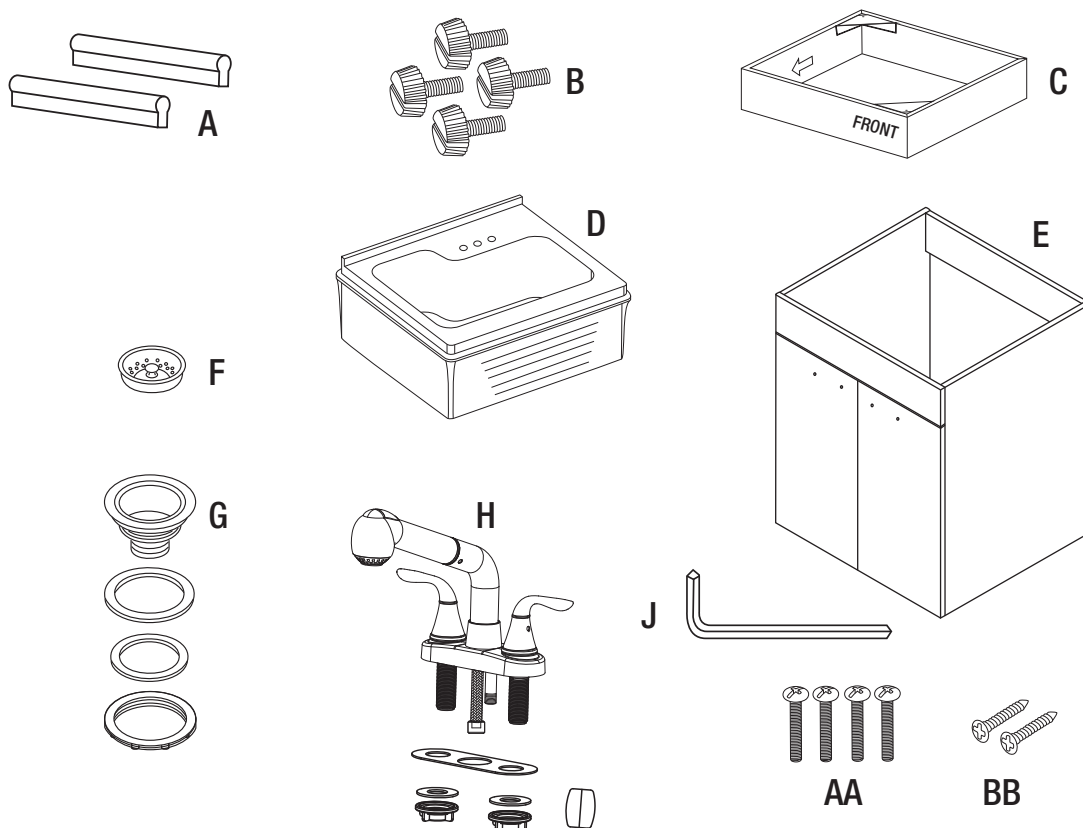
Tail Pipe



Supply Lines

Pre-Installation (continued)

PACKAGE CONTENTS



| Part | Description | Quantity |
|------|--------------------|----------|
| A | Door Handles | 2 |
| B | Cabinet Feet | 4 |
| C | Cabinet Base | 1 |
| D | Utility Sink | 1 |
| E | Cabinet | 1 |
| F | Strainer Basket | 1 |
| G | Strainer Assembly | 1 |
| H | Faucet Assembly | 1 |
| J | Allen Key | 1 |
| AA | Door Handle Screws | 4 |
| BB | Base Screws | 2 |

Installation

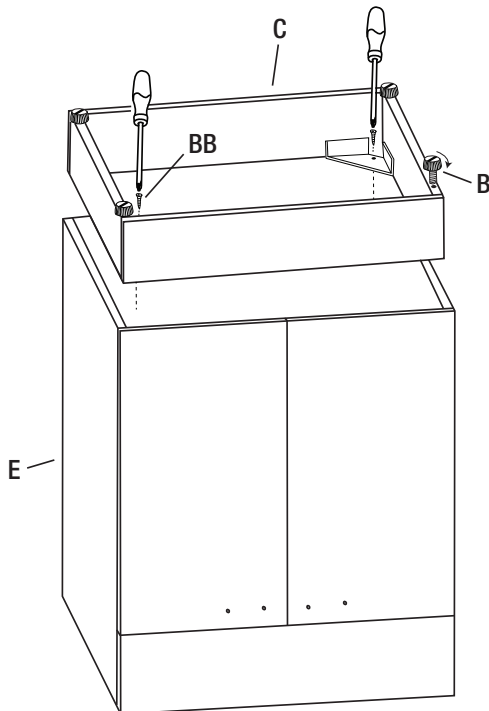
BASE INSTALLATION

A thorough inspection must be made before installation and any damages or missing parts must be promptly reported. Do not proceed with the installation. Do not dispose of packaging before you are satisfied with your new utility sink.

1. Unpack the unit and place the sink (D) on a blanket or cardboard to protect the surface.
2. Turn the cabinet (E) upside down onto the protective surface.
3. Gently attach the cabinet base (C) onto its proper location. Using the supplied base screws (BB), attach the base to the cabinet.
4. Attach cabinet feet (B) to the base.
5. Gently place the cabinet upright.

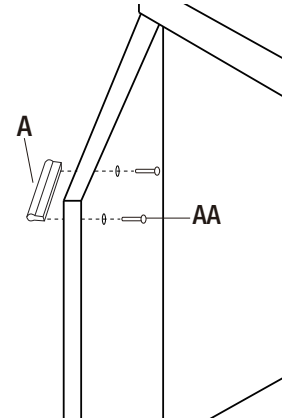


CAUTION: Do not place side load onto feet when righting the cabinet.



DOOR HANDLE INSTALLATION

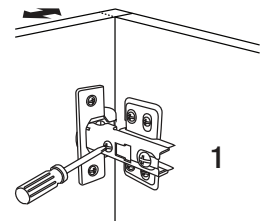
1. Insert the door hand screws (AA) into the pre-drilled holes on each door.
2. Attach the door handles (A) and hand tighten the door handle screws (AA).
3. Repeat on other door.



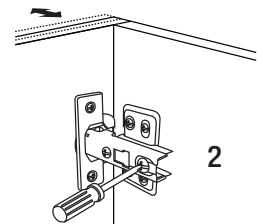
DOOR POSITION ADJUSTMENT

If the doors need to be repositioned, the hinges can be adjusted to ensure a precise fit with the cabinet.

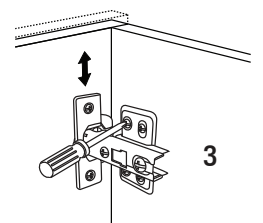
4. The lateral adjustment screw adjusts the door left or right.



5. The horizontal adjustment screw adjusts the door forward or backward.



6. The vertical adjustment screw adjusts the door up or down.

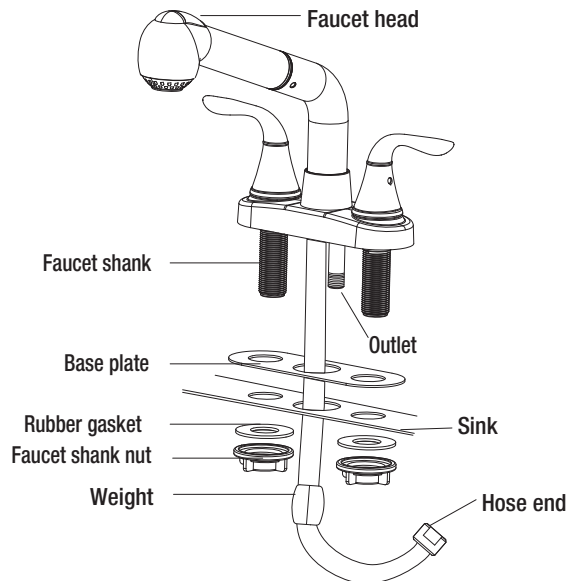


Installation (continued)

FAUCET AND SPRAYER INSTALLATION

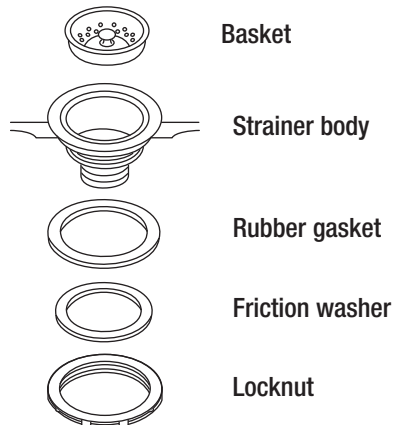
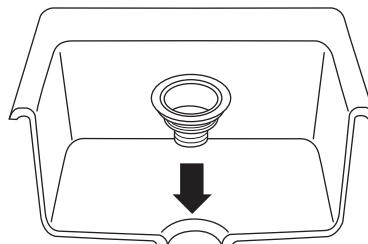
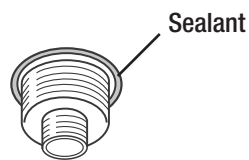
Before installing, carefully unpack the faucet and ensure no parts are missing.

1. Insert the faucet shank, hose end and outlet through the holes of the base plate and sink accordingly.
2. From underneath, slide the rubber gasket and faucet shank nut over the end of the faucet shank, then tighten the faucet shank by hand until it is snug.
3. Connect the hose end to the outlet. Then install the weight to the hose in a good location so you could easily pull out the faucet and replace it in its original position easily.
4. Connect the water supply lines (not supplied) to the faucet.



STRAINER INSTALLATION

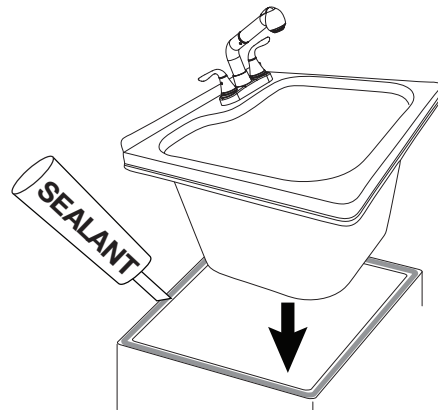
1. Apply a ring of sealant to the underside of the strainer flange.
2. Insert the strainer body into the sink.
3. Assemble the rubber gasket, friction washer and locknut onto the strainer body from under the sink.
4. Hand tighten the locknut. Do not over tighten locknut as it may split or deform the body of the strainer.



Installation (continued)

MOUNTING THE UTILITY SINK

1. Carefully place a bead of sealant all around the top of the cabinet.
2. Ease the sink onto the cabinet, and ensure it is placed evenly and centered on the cabinet. Wipe off any excess sealant. Use masking tape to hold the unit in place until the sealant dries.



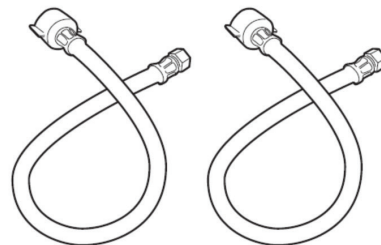
PLACEMENT

Move the assembled unit to its final location. Final hook up of the supply lines and drain system can now be completed.

SUPPLY LINES (NOT INCLUDED)

The supply lines that attach the faucet to the household water system, are not supplied with this unit. They need to be purchased separately.

Follow the manufacturers instructions for proper installation of the supply lines.

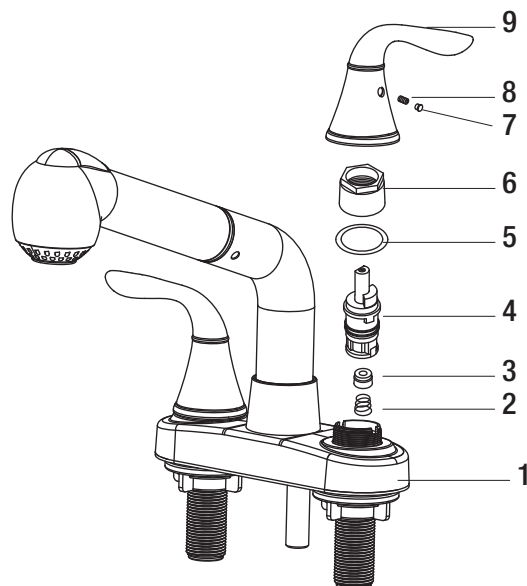


Maintenance

CARTRIDGE REPLACEMENT

To replace the cartridge, please follow these steps:

1. Turn off the water supply to the faucet.
2. Remove water indicator (7) and screw (8) with an Allen key.
3. Remove the handle (9).
4. Screw off the cartridge cover (6).
5. Remove the gasket (5).
6. Pull out the cartridge (4) by hand, make sure part (3) and (2) are not out.
7. Click in the new cartridge.
8. Place the gasket (5) back in its original position.
9. Screw on the cartridge cover (6). Do not over tighten.
10. Place the handle (9) over top and secure the screw (8) with an Allen key, replace the water indicator (7).



Care and Cleaning

UTILITY SINK

This utility sink is manufactured with premium ABS. With the proper care and maintenance it will provide you with many years of enjoyment.

| Do |
|---|
| <ul style="list-style-type: none">- Use common household cleaners (non-abrasive) or a mild liquid dish washing detergent. Rinse well and dry with a clean cloth.- Remove dust and dry dirt with a soft, damp cloth.- Clean grease, oil, paint and ink stains with isopropyl (rubbing alcohol). Immediately rinse with water after removal of stain. |

| Do not |
|--|
| <ul style="list-style-type: none">- Do not allow your ABS surface to come into contact with products such as acetone (nail polish remover), nail polish, dry cleaning solution, lacquer thinners, gasoline, pine oil, etc.- Use caution when using sharp instruments that may fall and scratch the surface. |

CABINET

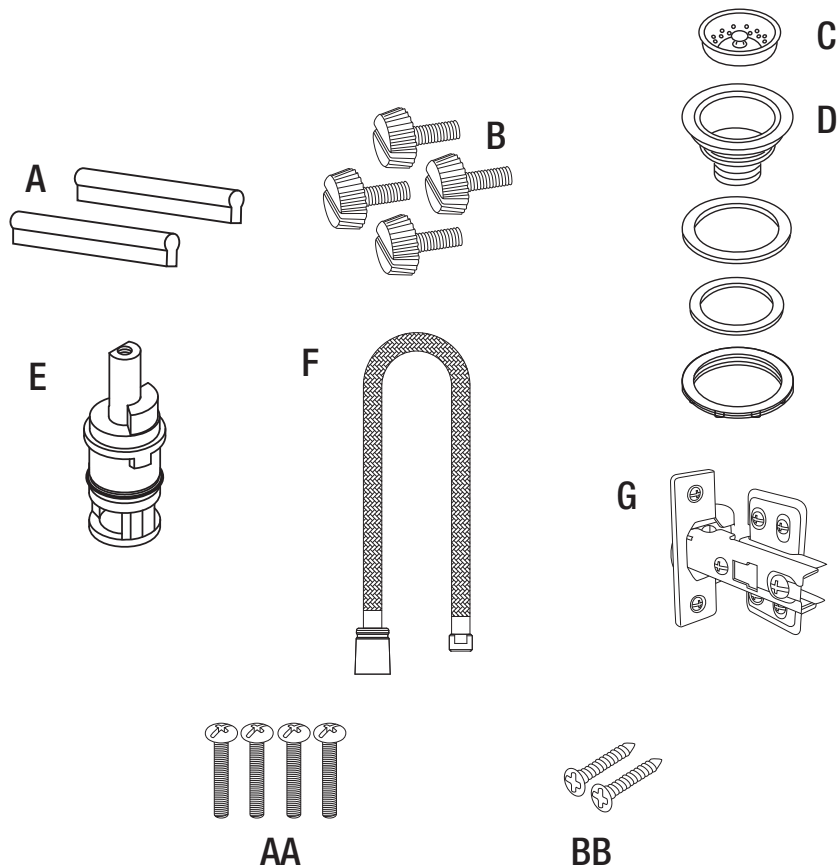
To maintain the surface of your cabinet, follow these tips.

| Do |
|---|
| <ul style="list-style-type: none">- Remove dust and dry dirt with a soft, damp cloth.- Clean grease, oil, paint and ink stains with isopropyl (rubbing alcohol). Immediately rinse with water after stain removal. |

| Do not |
|--|
| <ul style="list-style-type: none">- Do not allow your cabinet surface to come into contact with products such as acetone (nail polish remover), nail polish, dry cleaning solution, lacquer thinners, gasoline, pine oil, etc.- Use caution when using sharp instruments that may fall and scratch the surface. |

Service Parts

If you are missing parts or if you require replacement parts, please contact our customer service team at 1-800-626-3525, 8:30 am – 5 pm, EST, Monday–Friday. Identify the required part(s) and have the part number(s) ready.



| Part | Description | Code | Quantity |
|------|--------------------|--------|----------|
| A | Door Handles | QHL101 | 2 |
| B | Cabinet Feet | QHL107 | 4 |
| C | Strainer Basket | QHS101 | 1 |
| D | Strainer Assembly | QHS149 | 1 |
| E | Cartridge | QHS137 | 1 |
| F | Faucet Hose | QHL158 | 1 |
| G | Cabinet Hinges | QHL111 | 4 |
| AA | Door Handle Screws | QHL104 | 4 |
| BB | Base Screws | QHL108 | 2 |

Questions, problems, missing pieces?
Before returning to the store, please contact Customer service
from 8:30 am to 5 pm, EST, Monday - Friday

1-800-626-3525

Keep this manual for future use.

Made in China

